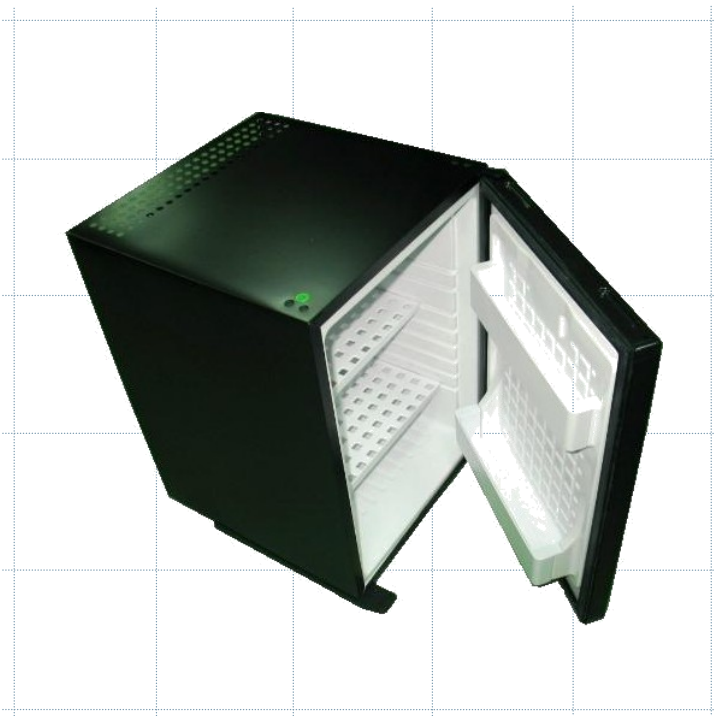


Onity presents **solutiOn10+**, a range of silent minibars backed up by the leading company in solutions for the hospitality market.

- **Ecological:** they comply with the highest quality and environmental requirements.
- **Silent:** The absorption technology cooling system, featuring no moving parts, ensures a totally silent operation.
- **Flexibility:** The door is reversible thanks to its changeable hinges, in a quick and easy way.
- **Different sizes:** **solutiOn10+** minibars are available in two sizes, 30 and 40L (52 and 60L also available in **solutiOn** model).
- **Options:** A range of optional features is available to personalise the product to meet customers' needs.

IMPORTANT: Ventilation

The cooling unit requires ventilation space for an optimal running of the minibar, therefore it is recommended to leave a minimum space of **6 cm** around it.



Technical Specifications

| Model | 30 L | 40 L |
|-------------------------------------|--|--|
| Net Volume | 28 Litres | 36 Litres |
| Dimensions with Packing (H x W x D) | 559 x 432 x 464 mm | 604 x 432 x 484 mm |
| Dimensions Unpacked (H x W x D) | 512 x 408 x 415 mm | 557 x 408 x 454 mm |
| Nominal Power | 60 Watt | 60 Watt |
| Power Supply | 230V / 50-60Hz | 230V / 50-60Hz |
| Energy Consumption | 1.1 kWh / 24h | 1.15 kWh / 24h |
| Net Weight | 11,55 Kg | 12,60 Kg |
| Gross Weight | 13,00 Kg | 14,10 Kg |
| Thermostat Type | Mechanical | Mechanical |
| Temperature Settings | 3 | 3 |
| Temperature Interval | 16 to 32 °C | 16 to 32 °C |
| Climate Class | N | N |
| Internal Light | Yes (led type) | Yes (led type) |
| Shelves | 2 white plastic trays | 2 white plastic trays |
| Door slider for cabinet | Yes (optional) | Yes (optional) |
| Glass door | (only available for solutiOn model) | (only available for solutiOn model) |
| Other Options | Wheels, Lock, Built-In (cabinet instal.) | Wheels, Lock, Built-In (cabinet instal.) |